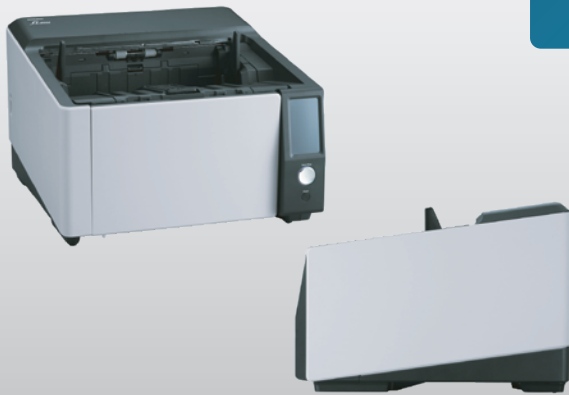


Production Scanner

fi-8930

Feature-rich
production scanner
for long-term ROI

RICOH
imagine. change.



The RICOH fi-8930 heavy-duty production scanner offers greater lifetime value for organizations ready to level up their digitization operations.

Pro efficiency at the touch of a button

The fi-8930 is powered by an innovative new engine that has multiple patents pending. Power through backlogged paper and digitize daily operations with high-speed performance and large batch sizes. Plus, enjoy user-friendly design and intuitive features.

- 130 pages per minute / 260 images per minute
- 750 sheet Automatic Document Feeder (ADF)
- Daily Volume: 110,000 sheets
- 4.3-inch Touchscreen and button interfaces

Superior paper handling for productive scanning workflows

Spend less time prepping, processing, and troubleshooting batches of documents. The fi-8930 comes with advanced throughput technologies to help protect documents, data, and the hardware. Scanner operators can enjoy fewer jams and re-scans along with improved quality, speed, and workflow processes.

- Stapled Documents Detection: Detects pages that have been stapled, regardless of location.
- Paper Ejection Control: Improves document ejection, handling, and workflow.
- Automatic Skew Correction: Corrects document alignment one by one before scanning
- Straight Path capabilities: Accounts for thick or cumbersome documents at the flip of a switch, minimizing process interruptions.

Outstanding image quality and accuracy

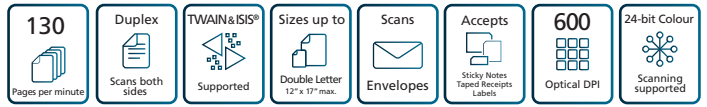
Capture images clearly, quickly, and correctly to maintain data accuracy. With our proprietary image software, the fi-8930 ensures that your scans can meet strict compliance standards.

- Clear Image Capture: Produces high-definition images for data extraction.
- PaperStream IP: Processes images for optimal image correction.
- PaperStream Capture: Provides front-end image cleanup, easy navigation, and ready-to-go profiles.
- OverScan Control: Detects skewed documents and adapts to capture all data and avoid image loss.

Why RICOH fi-8930?

The heavy-duty fi-8930 production scanner is for future-forward organizations ready to invest in operational efficiency. This scanner boasts exceptional durability, reliability, and capabilities that make total cost of ownership a clear value.

Digitized data lasts forever. There's too much on the line to risk poor results. Invest in the fi-8930 for an innovative edge, unmatched reliability, and a more seamless digitization experience.



Technical Information

Scanner Type	ADF (Automatic Document Feeder)/Manual Feed, Duplex
Scanning Speed*1 (Landscape) (Colour*2/Grayscale*2/ Monochrome*3)	Simplex: 130 ppm (200/300 dpi) Duplex : 260 ipm (200/300 dpi)
Scanning Speed*1 (Portrait) (Colour*2/Grayscale*2/ Monochrome*3)	Simplex: 100 ppm (200/300 dpi) Duplex : 200 ipm (200/300 dpi)
Image Sensor Type	CIS x 2 (front x 1, back x 1)
Light Source	RGB LED x 4 (front x 2, back x 2)
Optical Resolution	600 dpi
Output Resolution*4 (Colour/Grayscale/ Monochrome)	50 to 600 dpi (adjustable by 1 dpi increments), 1,200 dpi (driver)*5
Output Format	Colour: 24-bit, Grayscale: 8-bit, Monochrome: 1-bit
Background Colours	White/Black (selectable)
Document Size	
Maximum	12 x 17 in (304.8 x 431.8 mm)
Minimum	1.9 x 2.8 in (48 x 70 mm)
Long Page Scanning*6	240 in (6,096 mm) (up to 200 dpi)
Paper Weight (Thickness)	
Straight Scan	
Larger than A5 and up to A4 Size	5.3 to 152 lb (20 to 570 g/m ²)
A5 or Smaller and Over A4 Size	11 to 152 lb (40 to 570 g/m ²)
Envelope	.05 in or less
U-turn Scan	
Larger than A5 and up to A4 Size	5.3 to 56 lb (20 to 209 g/m ²)
A5 or Smaller Size	17 to 56 lb (64 to 209 g/m ²)
Over A4 Size	17 to 68 lb (64 to 256 g/m ²)* **
ADF Capacity*8	750 sheets (Letter 20 lb or A4 80 g/m ²) Total thickness: less than 3.15 in
Expected Daily Volume*9	110,000 sheets
Multifeed Detection	Overlap detection (Ultrasonic sensor), Length detection
Paper Protection	Stapled Documents Detection, Lag detection
Other Functions	Automatic Skew Correction
Interface	
USB	USB 3.2 Gen1/USB 3.0/USB2.0/USB1.1
Ethernet	10BASE-T/100BASE-TX/1000BASE-T
Power Requirements	AC 100 to 240 V ±10%
Power Consumption	
Operating Mode	70 W or less/40 W or less (Eco mode)
Sleep Mode	2.5 W or less
Auto Standby (Off) Mode	0.2 W or less

Operating Environment	
Temperature	41 to 95°F (5 to 35°C)
Relative Humidity	15 to 80% (non-condensing)
Environmental Compliance	ENERGY STAR®, RoHS, Epeat Gold
Dimensions*10 (Width x Depth x Height)	18.1 x 16.9 x 12.4 in (460 x 430 x 315 mm)
Weight	50.7 lb (23 kg)
Supported Operating Systems	Windows® 11**11, Windows® 10**11, Windows Server® 2022, Windows Server® 2019, Windows Server® 2016
Software/Drivers	PaperStream IP Driver (TWAIN/TWAIN x64/ISIS), WIA Driver**12, PaperStream Capture, PaperStream ClickScan**13, Software Operation Panel, Error Recovery Guide, Scanner Central Admin Server, Scanner Central Admin Desktop
Image Processing Functions	Multi image output, Automatic colour detection, Blank page detection, Static threshold, Dynamic threshold (iDTC), Advanced DTC, SDTC, Error diffusion, Dither, De-Screen, Emphasis, Dropout colour (None/ Red/Green/Blue/White/Saturation/Custom), sRGB output, Hole punch removal, Cropping, Index tab cropping, Split image, De-Skew, Edge correction, Vertical streaks reduction, Character extraction, Background pattern removal, Automatic profile selection
Warranty	1 Year Onsite Warranty
Included Items	AC cable, AC adapter, USB 3.0 cable, Setup DVD-ROM

Industry-leading support keeps digital transformation projects on-time and on budget
 • Canadian based support • Specialized Teams • Flexible service programs

Service Programs & Options

Post-Imprinter Front	PA03830-D301	Front side post-scan printing on document
Post-Imprinter Back	PA03830-D303	Back side post scan printing on document
Carrier Sheets	PA03360-0013	Each package contains 5 carrier sheets
Photo Carrier Sheets	PA03770-0015	Each package contains 3 carrier sheets
PaperStream Capture Pro	PSCP-MV-0001	PaperStream Capture Pro Mid-Volume software license
2 year warranty extension	OS2YR-8930	Provides an additional 2 years of on-site warranty coverage.
4 year warranty extension	OS4YR-8930	Provides an additional 4 years of on-site warranty coverage.

Consumables

Pick Roller	PA03830-K021	Every 700,000 sheets or one year
Separator Roller	PA03830-K022	Every 700,000 sheets or one year
Brake Roller	PA03830-K023	Every 700,000 sheets or one year
Print Cartridge	CA00050-0262	4,000,000 printed characters or 6 months after opening the bag
Consumable Kit	CONSKIT-MP03	Consumable kit with cleaning supplies for fi-8930 and fi-8950

Insist on Genuine Ricoh Service to keep your scanner running at its best

*1 Scanning speeds may vary due to the system environment. For details, please visit our website at: <https://www.pfu.ricoh.com/global/scanners/fi/>. *2 Indicated speeds are from using JPEG compression. *3 Indicated speeds are from using TIFF CCITT Group 4 compression. *4 When scanning in high resolutions (600 dpi or above), scanning may be rejected depending on scanning mode, document size, memory size, and application program. Selectable maximum resolution may vary depending on the length of the scanned document. *5 Limitations may apply to the size of documents that can be scanned, depending on system environment, when scanning at high resolution (over 600 dpi). *6 The maximum document length for long page scanning depends on the resolution: 215 in (5,461 mm) for up to 300 dpi, 160 in (4,064 mm) for up to 400 dpi, 34 in (863.6 mm) for up to 600 dpi, and 17 in (431.8 mm) for up to 1,200 dpi.*7 Scanning of documents from 56 to 68 lb (209 to 256 g/m²) is supported only when the temperature is 77±9°F (25±5°C) and humidity is 50±10%. *8 Maximum capacity depends on paper weight and may vary. *9 Numbers are calculated using scanning speeds and typical hours of scanner use, and are not meant to guarantee daily volume or unit durability. *10 With the ADF hopper closed. *11 fi Series scanners do not run with Windows® 11 and 10 ARM-based PCs. *12 Functions equivalent to those offered by PaperStream IP may not be available with the WIA Driver. *13 Refer to the fi Series Support Site for driver/software downloads and full lineup of all supported operating system versions.

Trademarks

ISIS is a trademark of Open Text. Microsoft, Windows, and Windows Server are trademarks of the Microsoft group of companies. Any other products or company names appearing in this document are the trademarks or registered trademarks of the respective companies.

Safety Precautions

Be sure to carefully read all safety precautions prior to using this product and use this device as instructed. Do not place this device in wet, moist, steamy, dusty or oily areas. Using this product under such conditions may result in electrical shock, fire or damage to this product. Be sure to limit the use of this product to listed power ratings.

ENERGY STAR®

PFU Limited has determined that this product meets the ENERGY STAR® guidelines for energy efficiency. ENERGY STAR® is a registered trademark of the United States.